

NEWSLETTER #2

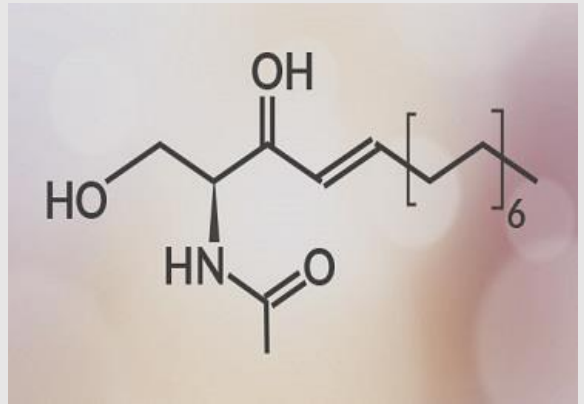
Skin protection with Ceramide
Stable & Easy-to-use Innovation ceramide

2022.02

Ceramide

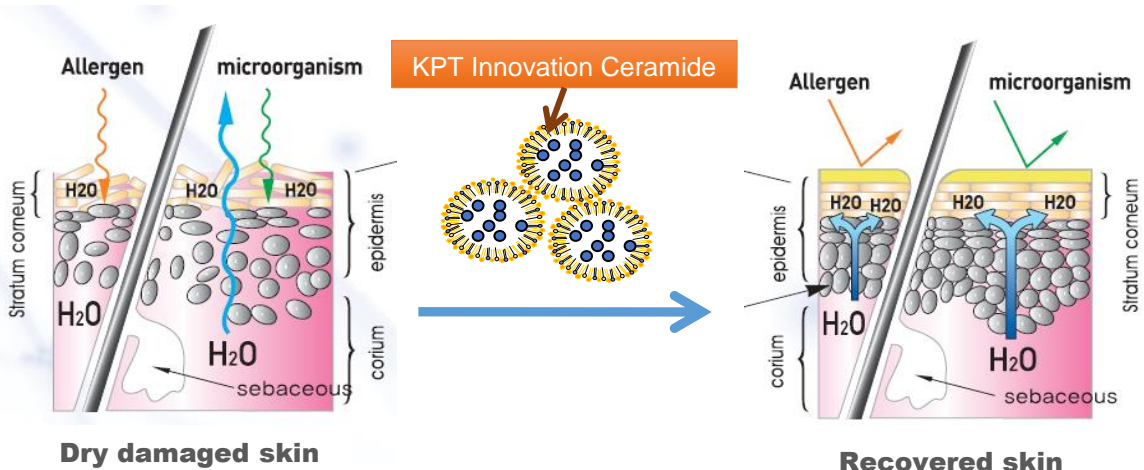
The stratum corneum plays an important role in maintaining moisture in the skin and protecting the skin from external irritation. The substance that fills between keratinocytes in the stratum corneum is called intercellular lipids, and this is Ceramide.

Ceramide plays an important role in skin barrier functions by inhibiting moisture evaporation from the body and allowing moisture to stay on the skin for a long time by combining it with moisture.



What if the Stratum Corneum is deficient in lipids?

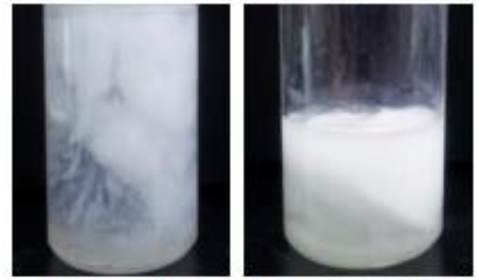
Various skin diseases may occur due to weakened skin immunity and homeostasis.



Easy-to-use Innovation ceramide

The problem of using existing ceramides?

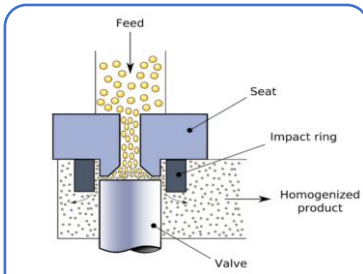
- Low stability
- Re-Crystallization
- Coagulation
- Flocculation



Coagulation

Flocculation

Easy to use for Formulation



**Special
Technology**



**Convenient
Use**



**Various
Formulation**



- Liposome, Nanoemulsion, High Pressure Homogenized Technology
- Easy to use for essence, Emulsion, cream, toner, mist, and mask packs
- Ceramide can be used without additional processes such as heating, liposome, or emulsifying when applied to formulations
- Ceramide content of 2~6%

Actosome Inoceramide E06

Glycerin, Caprylic/Capric Triglyceride, Water, Deoxyphytantriyl palmitamide MEA, Hydrogenated Lecithin, Cholesterol, Ceramide NP

Cerasol 2.0

Water / Caprylic/Capric Triglyceride / Glycerine / Hydrogenated Lecithin / Ceramide NP / 1,2-Hexandiol / Ethylhexylglycerin